

Carboma

Cube 2

Vertical display cases

Minimalism in design, emphasis on the product, the national brand «Made in Russia»

Placing a large number of goods in the smallest possible space

It will fit elegantly into all shopping areas from corner shops to hypermarkets.

The ability to meet different customer needs – multiple modifications in various sizes

A wide range of applications: from impulse sales with an open facade to maximum energy savings and reduced heat loss in models with glass fronts

The exterior WOOD finish will emphasize the uniqueness of the shop floor



Open



Specifications

| Model | Dimensions with sidewalls, mm | Refrigerated area, m ² | Net (refrigerated) volume, m ³ | Operating temperature, °C |
|--------------------------------|-------------------------------|-----------------------------------|---|---------------------------|
| FC20-07 VM 0,6-2 (version 2.0) | 590x700x1910 (1960) | 1,05 | 0,21 | 0...+7 |
| FC20-07 VM 0,7-2 (version 2.0) | 730x700x1910 (1960) | 1,34 | 0,27 | |
| FC20-07 VM 1,0-2 (version 2.0) | 1050x700x1910 (1960) | 2,0 | 0,4 | |
| FC20-07 VM 1,3-2 (version 2.0) | 1320x700x1910 (1960) | 2,57 | 0,51 | |
| FC20-07 VM 1,9-2 (version 2.0) | 1945x700x1910 (1960) | 3,87 | 0,77 | |
| FC20-07 VM 2,5-2 (version 2.0) | 2570x700x1910 (1960) | 5,18 | 1,04 | |

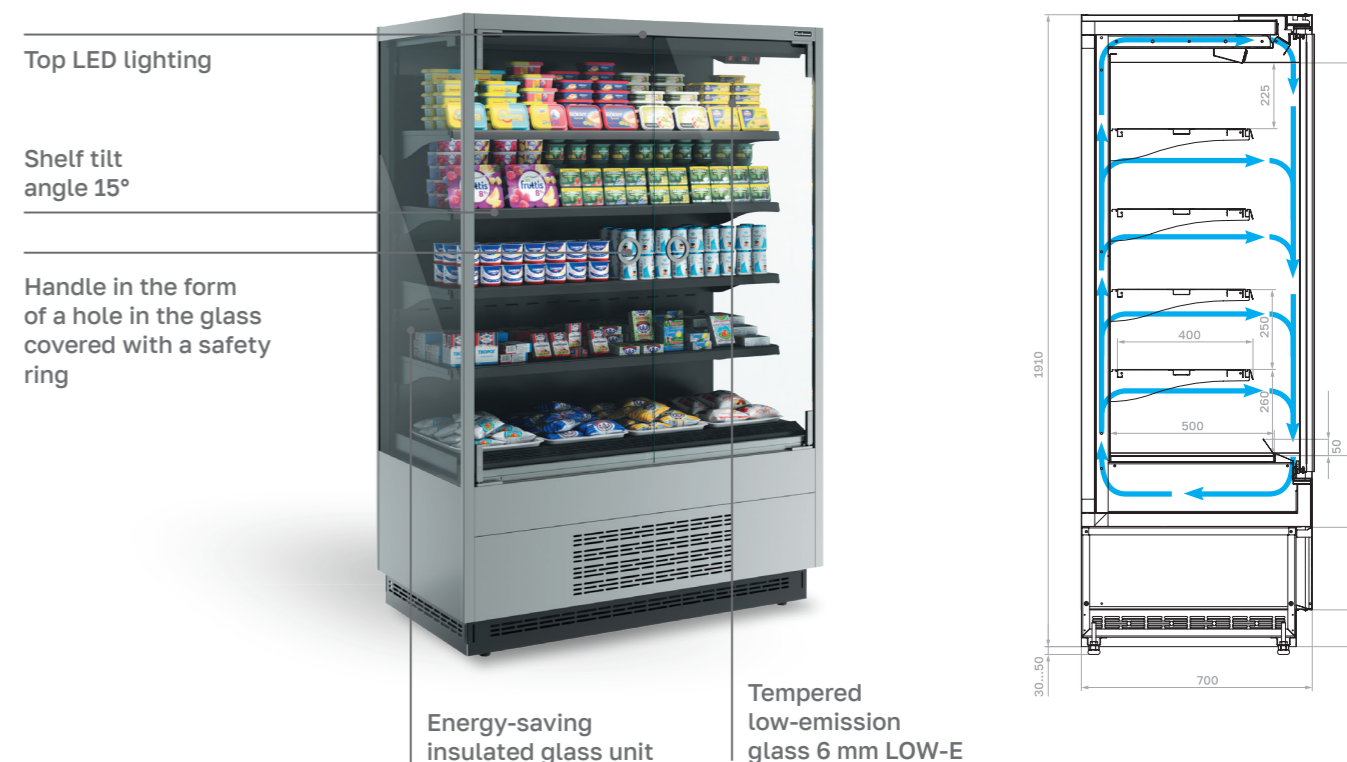
Options

Metal sidewalls
 Metal sidewalls with a mirror
 Additional shelf
 LED lighting for each shelf (4000K, PINK)
 Top LED lighting (PINK)
 Stopper (wire, plexiglass)
 Price tag holders

Equipment for fruit
 Wheels
 Night curtain (open)
 Electric defrost (open, front X0)
 Partition for the enclosure (1,9; 2,5)
 Mounting bracket, sausage hanger
 Hanger, meat hook

The manufacturer reserves the right to modify equipment design and scope of supply without prior notice

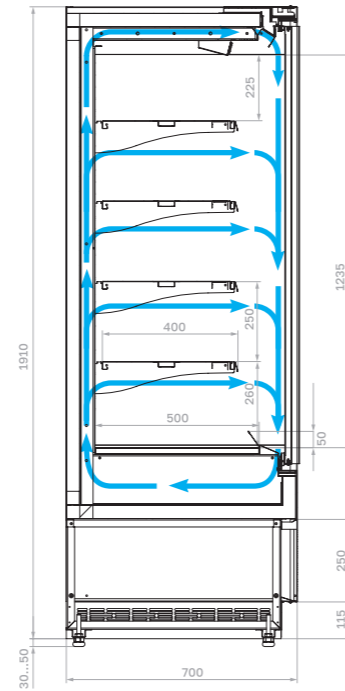
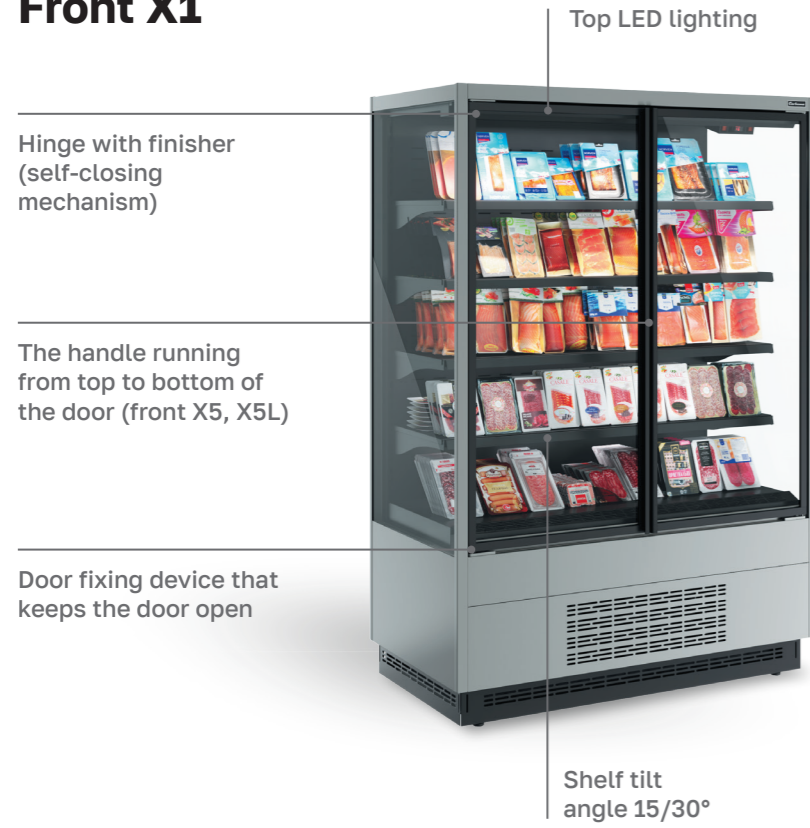
Front X0



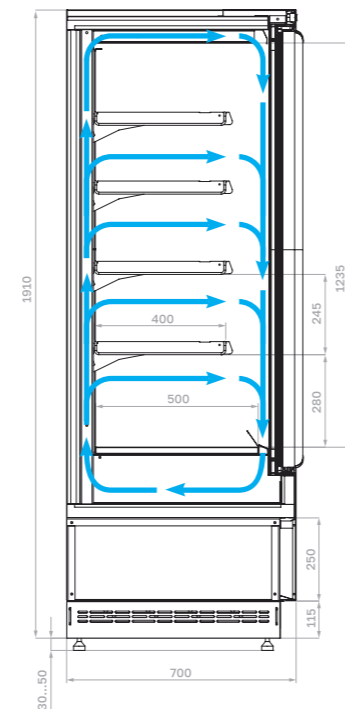
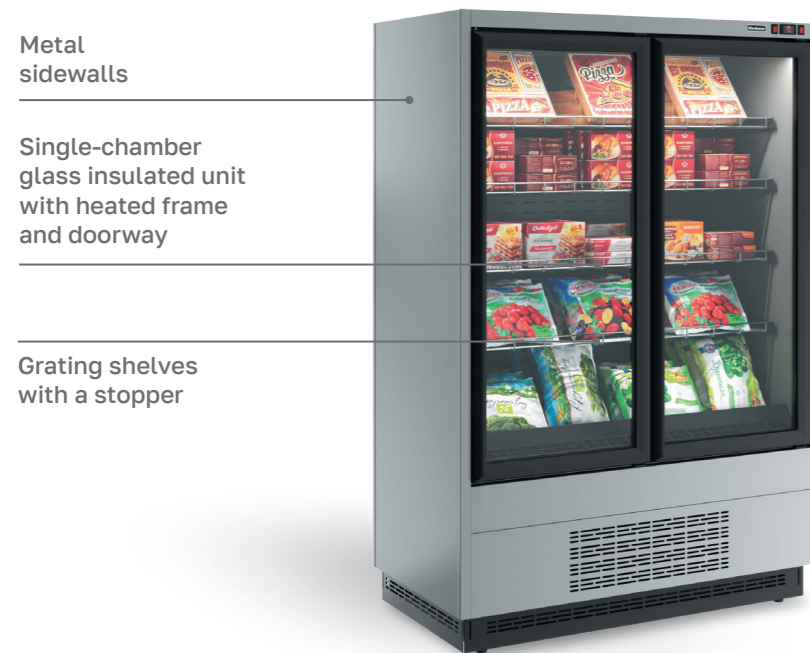
Specifications

| Model | Dimensions with sidewalls, mm | Refrigerated area, m ² | Net (refrigerated) volume, m ³ | Operating temperature, °C |
|---|-------------------------------|-----------------------------------|---|---------------------------|
| FC20-07 VM 0,6-1 LIGHT front X0 (version 2.0) | 590x700x1910 (1960) | 1,05 | 0,21 | 0...+7 |
| FC20-07 VM 0,7-1 LIGHT front X0 (version 2.0) | 730x700x1910 (1960) | 1,34 | 0,27 | |
| FC20-07 VM 1,0-1 LIGHT front X0 (version 2.0) | 1050x700x1910 (1960) | 2,0 | 0,40 | |
| FC20-07 VM 1,3-1 LIGHT front X0 (version 2.0) | 1320x700x1910 (1960) | 2,57 | 0,51 | |
| FC20-07 VM 1,9-1 LIGHT front X0 (version 2.0) | 1945x700x1910 (1960) | 3,87 | 0,77 | |
| FC20-07 VM 2,5-1 LIGHT front X0 (version 2.0) | 2570x700x1910 (1960) | 5,18 | 1,04 | |

Front X1



Front X5L



Specifications

| Model | Dimensions with sidewalls, mm | Refrigerated area, m ² | Net (refrigerated) volume, m ³ | Operating temperature, °C |
|--|-------------------------------|-----------------------------------|---|---------------------------|
| FC20-07 VV 0,6-1 STANDARD front X1 (version 2.0) | 590x700x1910 (1960) | 1,05 | 0,21 | -2...+5 |
| FC20-07 VV 0,7-1 STANDARD front X1 (version 2.0) | 730x700x1910 (1960) | 1,34 | 0,27 | |
| FC20-07 VV 1,0-1 STANDARD front X1 (version 2.0) | 1050x700x1910 (1960) | 2,0 | 0,40 | |
| FC20-07 VV 1,3-1 STANDARD front X1 (version 2.0) | 1320x700x1910 (1960) | 2,57 | 0,51 | |
| FC20-07 VV 1,9-1 STANDARD front X1 (version 2.0) | 1945x700x1910 (1960) | 3,87 | 0,77 | |
| FC20-07 VV 2,5-1 STANDARD front X1 (version 2.0) | 2570x700x1910 (1960) | 5,18 | 1,04 | |
| FC20-07 VL 1,0-1 0300 STANDARD front X5L (version 2.0) | 1080x700x1910 (1960) | 2,0 | 0,40 | до -18 |
| FC20-07 VL 1,3-1 0300 STANDARD front X5L (version 2.0) | 1350x700x1910 (1960) | 2,57 | 0,51 | |

Standard version



9006/9005



0430

Standard colors



RAL 9016



RAL 1016



RAL 9006



RAL 6018



RAL 9005



RAL 3020



RAL 3004



RAL 5017



RAL 7024



RAL 1015

Custom-made version

Panels painted any color from RAL chart

WOOD Front panel pattern/MDF



0106
Gray oak



0107
Alder



0105
Wenge



0108
Dark oak



0110
Mariel

WOOD. Egger finish



3303
Hamilton oak